

# Concerto pour deux dessus et basse op.28 n°2

Mouvement 3 : Allegro

Joseph Bodin de Boismortier

Tutti

Dessus 1

Dessus 2

Basse

6

D. 1

D. 2

B.

12

Solo

D. 1

D. 2

B.

18

Tutti

D. 1

D. 2

B.

24

D. 1

D. 2

B.

2  
30

D. 1

D. 2

B.

Solo

36

D. 1

D. 2

B.

42

D. 1

D. 2

B.

48

Solo

D. 1

D. 2

B.

54

D. 1

D. 2

B.

61

D. 1

D. 2

B.

This system contains measures 61 through 66. It features three staves: D. 1 (top), D. 2 (middle), and B. (bottom). The D. 1 staff has a treble clef and contains a melodic line with eighth-note patterns and some dotted notes. The D. 2 staff also has a treble clef and contains a similar melodic line. The B. staff has a bass clef and contains a bass line with eighth-note patterns. There are several plus signs (+) above notes in the D. 1 and D. 2 staves.

67

D. 1

D. 2

B.

This system contains measures 67 through 72. The D. 1 staff has a treble clef and contains mostly rests, with some eighth-note patterns starting in measure 70. The D. 2 staff has a treble clef and contains a melodic line with eighth-note patterns. The B. staff has a bass clef and contains a bass line with eighth-note patterns. There are plus signs (+) above notes in the D. 2 staff.

73

D. 1

D. 2

B.

This system contains measures 73 through 78. The D. 1 staff has a treble clef and contains mostly rests, with some eighth-note patterns starting in measure 73. The D. 2 staff has a treble clef and contains a melodic line with eighth-note patterns. The B. staff has a bass clef and contains a bass line with eighth-note patterns. There are plus signs (+) above notes in the D. 1 and D. 2 staves.

79

D. 1

D. 2

B.

This system contains measures 79 through 84. The D. 1 staff has a treble clef and contains mostly rests, with some eighth-note patterns starting in measure 80. The D. 2 staff has a treble clef and contains a melodic line with eighth-note patterns. The B. staff has a bass clef and contains a bass line with eighth-note patterns. There are plus signs (+) above notes in the D. 1 and D. 2 staves.

85

D. 1

D. 2

B.

This system contains measures 85 through 90. The D. 1 staff has a treble clef and contains a melodic line with eighth-note patterns. The D. 2 staff has a treble clef and contains a melodic line with eighth-note patterns. The B. staff has a bass clef and contains a bass line with eighth-note patterns. There are plus signs (+) above notes in the D. 1 and D. 2 staves.

4  
91

D. 1

D. 2

B.

96

D. 1

D. 2

B.

Tutti

101

D. 1

D. 2

B.

107

D. 1

D. 2

B.

113

D. 1

D. 2

B.

# Concerto pour deux dessus et basse op.28 n°2

Mouvement 3 : Allegro

Joseph Bodin de Boismortier

DESSUS 1

The musical score for the first part of the concerto is written for the first treble clef part. It begins with a **Tutti** dynamic marking. The score consists of ten staves of music, with measure numbers 6, 12, 19, 26, 32, 44, 50, 58, and 64 indicated at the start of their respective staves. The music features a variety of rhythmic patterns, including eighth and sixteenth notes, and rests. There are several dynamic markings: **Tutti** appears at the beginning and around measure 19, while **Solo** is used at measures 12 and 50. The score includes various articulations such as slurs, accents, and breath marks. A fermata is placed over a note at measure 32, and a **7** indicates a seven-measure rest. Another fermata is placed over a note at measure 64, with a **3** indicating a three-measure rest. The key signature has one sharp (F#) and the time signature is 2/4.

2  
72

7

85

91

95

100 *Tutti*

105

111

# Concerto pour deux dessus et basse op.28 n°2

Mouvement 3 : Allegro

Joseph Bodin de Boismortier

DESSUS 2

The musical score for the second part of the concertino is written for a single treble clef staff in 2/4 time. It consists of ten lines of music, with measure numbers 6, 12, 27, 33, 40, 46, 53, 61, and 67 marked at the beginning of their respective lines. The score includes several dynamic markings: 'Tutti' appears at the beginning of the first line and above the 9th measure of the third line; 'Solo' is placed above the 33rd measure. Articulation is indicated by '+' signs above notes in measures 33, 40, 46, 53, 61, and 67. The music features a variety of rhythmic patterns, including eighth and sixteenth notes, often beamed together, and rests. The key signature has one sharp (F#).

2  
73

77

83

**13**

Tutti

103

107

113



BASSE

# Concerto pour deux dessus et basse op.28 n°2

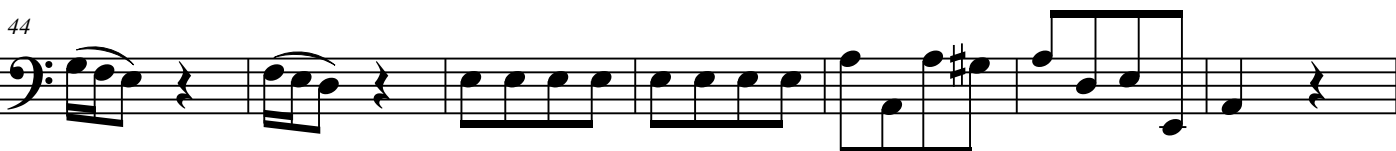
Mouvement 3 : Allegro

Joseph Bodin de Boismortier

Tutti



Tutti



11



2  
82



89



97

Tutti



104



111

